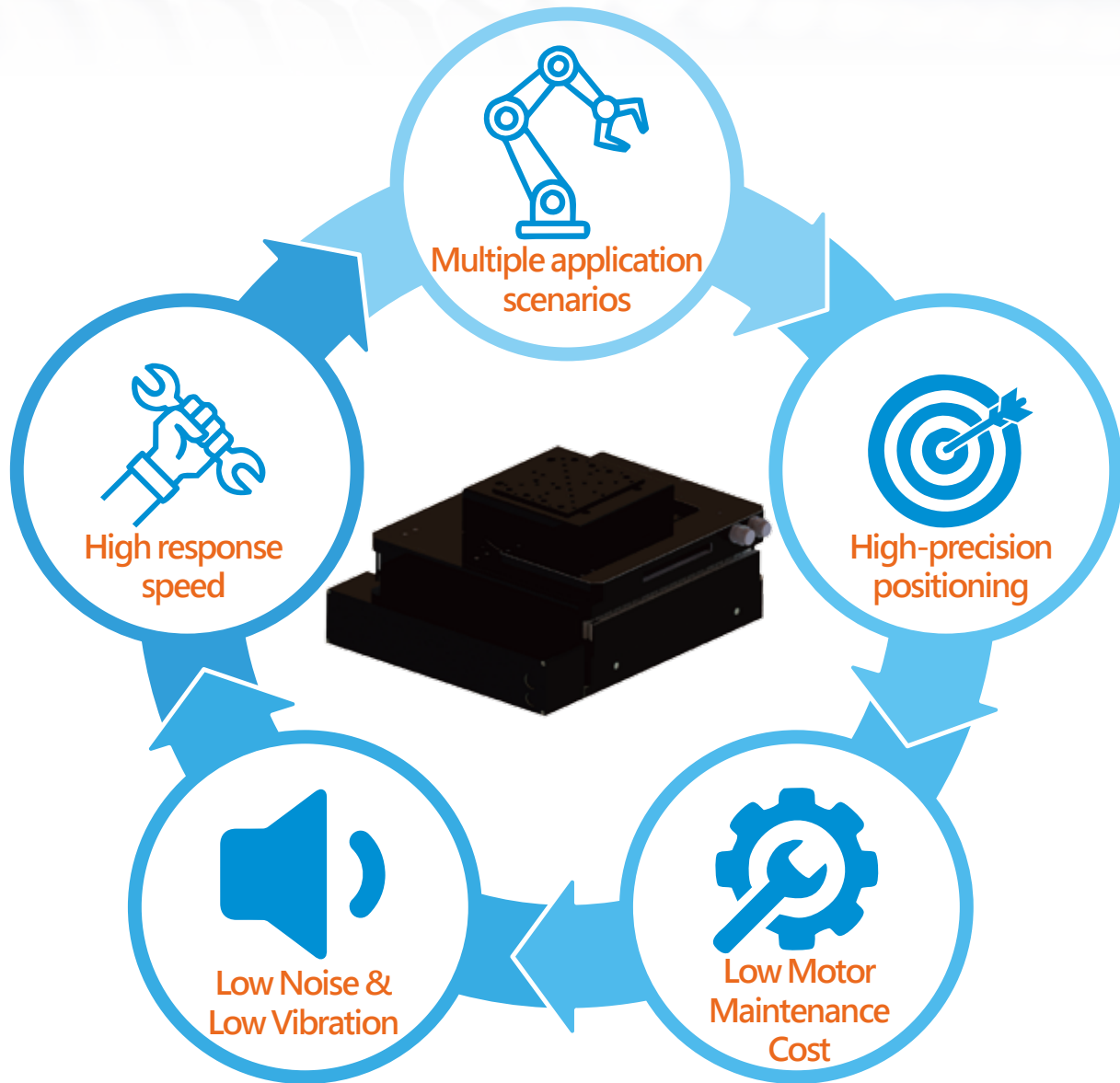


# XYZT Four-Axis Module

## Product Features

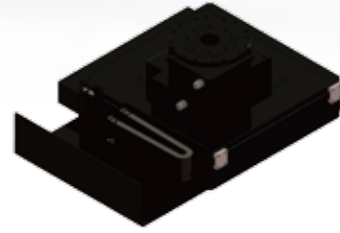
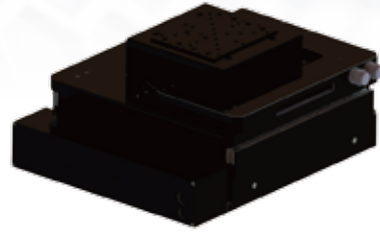


- An exclusive design solution of semiconductor wafer processing and inspection.
- Utilize a direct-drive motor as the primary power and optimize the stable movement in cross-roller guide with high rigidity.
- Our module can achieve the nanometer-level tolerance and ensure the high-speed performance.
- Modular design enables the flexible, adaptable, and various configurations based on customer requirements.
- Our module provides high precision motion control solutions which is widely applied in optical communication, semiconductor inspection, visual inspection, and micro engineering fields.

# XYZT Four-Axis Module



GMT GLOBAL INC.



Model	GNTXYZT-200-200-5-30			GNTXYZT-300-300-10-360		
Axis	XY	Z	T	XY	Z	T
Payload	5 Kg			8 Kg		
Stroke	200x200 mm	5 mm	± 15°	300x300 mm	10 mm	360°
Accuracy	± 0.35 μm	± 0.25 μm	± 2.5 arc-sec	± 0.55 μm	± 0.35 μm	± 2.5 arc-sec
Repeatability	± 0.2 μm	± 0.15 μm	± 1.5 arc-sec	± 0.2 μm	± 0.2 μm	± 1.5 arc-sec
Horizontal Straightness	± 1.5 μm	± 1 μm	--	± 2.5 μm	± 2.5 μm	--
Vertical Straightness	± 1.5 μm	± 1.5 μm	--	± 2.5 μm	--	--
Orthogonality	15 arc-sec	--	--	15 arc-sec	--	--
Continue Fore /Torgue	48.8 N	24.4 N	3 N	163.6 N	23 N	10 N
Peak Force /Torque	340 N	170 N	10 N	1013.2 N	170 N	30 N
Max Velocity	800 mm/s	75 mm/s	400 rpm	800 mm/s	5 mm/s	400 rpm
Max Acceleration	1 g	0.7 g	450 rad/s <sup>2</sup>	1.5 g	0.7 g	450 rad/s <sup>2</sup>
Current	4.4 Arms	2.2 Arms	2.3 Arms	6.24 Arms	2.2 Arms	3 Arms
Peak Current	30.7 Arms	15.351 Arms	6.5 Arms	38.6 Arms	15.351 Arms	18 Arms
Resistance	2.6 ohm	5.2 ohm	4.4 ohm	2.4 ohm	5.2 ohm	5 ohm
Inductor	0.35 H	0.7 H	5.8 H	0.665 H	0.7 H	10.5 H
Modules Weight	35 Kg			83 Kg		
Encoder Type	incremental , analog	incremental , analog	incremental , analog	incremental , analog	incremental , analog	incremental , analog



GMT GLOBAL INC.

[www.gmtglobalinc.com](http://www.gmtglobalinc.com)



**Global Operation Headquarter**  
 No. 357, Sec. 1, Yaofeng Rd., Puxin Township,  
 Changhua County 513004, Taiwan  
 TEL : +886-4-8282825  
 FAX : +886-4-8282228  
 E-mail : gmt@gmt.tw

**Xiushui Office**  
 No.3, Ln. 34, Minzhu St., Xiushui Township,  
 Changhua County ,504009, Taiwan  
 TEL : +886-4-7688327  
 FAX : +886-4-7688314  
 E-mail : stamping@gmt.tw

**South Area Sheng Feng Technology Co., Ltd.**  
 No.22,Aly. 53,Ln.428, Sec. 3,Wenhua Rd.,  
 Rende Dist., Tainan City 717021, Taiwan  
 TEL : +886-6-270-3518  
 FAX : +886-6-270-3510

**Dongguan Ding Qi Intelligent Automation Technology Ltd.**  
 No.8 Factory ,SHUI-BIAN Industrial Zone, Hengli Town,  
 Dongguan City, Guangdong Province, China  
 TEL : 0769-38827988

**GMT Europe GmbH**  
 Am Detershof 20 26655 Westerstede Germany  
 TEL : +49(0)4488 761 746