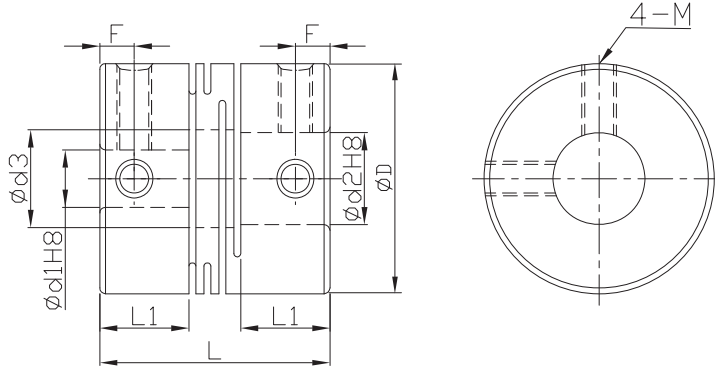


FSMMS



- Zero backlash.
- The flexure allowed by the beam portion of the coupling is capable of accommodating angular, and axial misalignment.
- No accommodating to parallel misalignment.
- High wrench torque rigidity and sensitivity.
- Rotation character of clockwise or anti-clockwise are exactly the same.
- Free maintenance, oil-resist and anti-corrosiveness.
- FSMMS can't allow axial deviation caused by offset
- Offset of angular, parallel, or axial deviation are individual allowed value, so couple reasons of axial offset appearing at same time would reduce the unit allowable value.



* $\text{Ød3} = \text{Ød2} + 0.5$

*When $\text{Ød1} < 4$ and $\text{Ød2} > 5$, there would be 3 set screws.
When Ød1 and Ød2 both smaller than 4, there would be 2 set screws.

Material	Accessories
SUS303	Set screw

Dimensions		Ød1	Ød2										L	L1	M Rough thread	F
Model no.	ØD		2	3	4	5	6	7	8	10	12	14				
FSMMS	8	2	•										10	3.4	2	1.7
		3		•												
	12	4			•	•							14	5.2	2.5	2.5
		5				•	•									
	16	5					•	•					18	6.8	3	3
		6					•	•								
		8					•	•	•							
	20	5					•	•	•				20	7.65	4	4
		6					•	•	•							
		8					•	•	•	•						
		10					•	•	•	•	•					
	25	5					•	•	•	•			25	9.6	4	4
6						•	•	•	•	•						
6.35						•	•	•	•	•	•					
32	8							•	•	•		32	12.6	4	6	
	10							•	•	•	•					
	12								•	•	•					•

★ Moment of inertial torque and weight calculated by maximum diameter.

Specification		Allowable wrench torque (N·m)	Allowable misalignment		Static torsional stiffness (N·m/rad)	Max. RPM (r/min ⁻¹)	★ Moment of inertia (kg·m ²)	Screw fixing torque (N·m)	★ Weight (g)
Model no.	ØD		Angular (°)	Axial (mm)					
FSMMS	8	0.2	1	±0.1	49	48000	2.4*10 ⁻⁸	0.3	2.7
	12	0.3			140	32000	1.8*10 ⁻⁷	0.5	7.8
	16	0.5			240	24000	7.2*10 ⁻⁷	0.7	18
	20	1		330	19000	2.0*10 ⁻⁶	0.7	32	
	25	2		±0.2	720	15000	6.1*10 ⁻⁶	1.7	63
	32	3.5			1300	12000	2.1*10 ⁻⁵	1.7	130

Ordering Example: FSMMS25 - 8 - 10 - 100 PCS
Model no. Ød1 Ød2 Q'ty