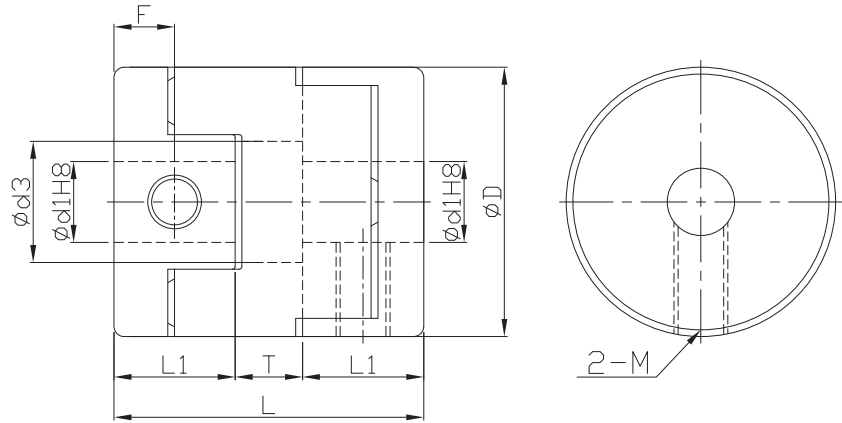


FAMN



- Operating temperature : -20°C~80°C
- Offset of angular, parallel, or axial deviation are individual allowed value, so couple reasons of axial offset appearing at same time would reduce the unit allowable value.



Component	Material	Surface finish	Accessories
Main frame	Aluminum Alloy	Anodized	Set screw
Spacer	(POM)	—	

Dimensions		Ød1&Ød2 selection *Ød1 ≤ Ød2														Set screw						
Model no.	ØD	3	4	5	6	6.35	7	8	9.525	10	11	12	14	15	16	Ød3	L	L1	T	F	M	Lock torque (N·m)
FAMN	16	•	•	•	•	•										7	18	7	4	3.5	3	0.7
	20		•	•	•	•	•	•								9	23	9	5	4.5	4	1.7
	25			•	•	•	•	•	•	•						11	28	11	6	5.5	5	4
	32							•	•	•	•	•	•			14.5	33	13	7	6.5	6	7
	40							•	•	•	•	•	•	•	•	17	32	14	4	7		

★ Moment of inertial torque and weight calculated by maximum diameter.

Specification		Allowable wrench torque (N·m)	Allowable misalignment		Static torsional stiffness (N·m/rad)	Max. RPM (r/min ⁻¹)	★ Moment of inertia (kg·m ²)	★ Weight (g)
Model no.	ØD		Angular (°)	Parallel (mm)				
FAMN	16	0.7	3	1.0	31	9500	3.2*10 ⁻⁷	7
	20	1.2		1.5	60	7600	1.0*10 ⁻⁶	14
	25	2		2.0	140	6100	3.0*10 ⁻⁶	27
	32	4.5		2.5	280	4800	9.5*10 ⁻⁶	50
	40	9		3.0	540	3800	2.3*10 ⁻⁵	80

©FAMN spacer selection, please refer to P.44

Ordering Example:	FAMN25	6	8	100 PCS
	Model no.	Ød1	Ød2	Q'ty