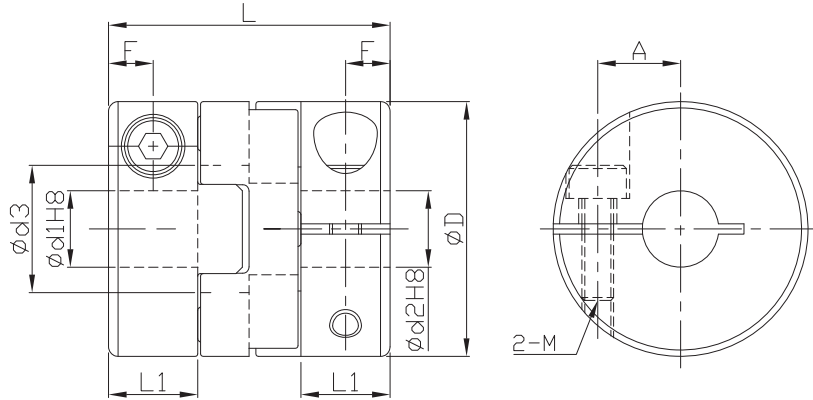


# FACPS



- Operating temperature : -20°C~80°C
- Offset of angular, parallel, or axial deviation are individual allowed value, so couple reasons of axial offset appearing at same time would reduce the unit allowable value.



Component	Material	Surface finish	Accessories
Main frame	AL 7075	Anodized	Clamping screw
Spacer	(POM)	—	

Dimensions		Ød1&Ød2 selection *Ød1 ≤ Ød2												Ød3	L	L1	F	A	Clamping screw		
Model no.	ØD	3	4	5	6	6.35	7	8	9.525	10	11	12	14						M	Lock torque (N·m)	
FACPS	12	●	●	●										6	14.9	5	2.5	4	2	0.5	
	16	●	●	●	●									8	21	7	3.5	5	2.5	1	
	20			●	●	●	●	●						10	22			6.5			
	25					●	●	●	●	●					14	27.2	8	4	9	3	1.5
	32						●	●	●	●	●	●	●		18	33.3	10	5	11	4	2.5

★Moment of inertial torque and weight calculated by maximum diameter.

Specification		Allowable wrench torque (N·m)	Allowable misalignment		Static torsional stiffness (N·m/rad)	Max. RPM (r/min <sup>-1</sup> )	★ Moment of inertia (kg·m <sup>2</sup> )	★ Weight (g)
Model no.	ØD		Angular (°)	Parallel (mm)				
FACPS	12	0.2	2	0.6	9	13000	7.1*10 <sup>-8</sup>	3
	16	0.4		1.0	30	9500	3*10 <sup>-7</sup>	8
	20	0.7		1.3	47	7600	7.4*10 <sup>-7</sup>	13
	25	1.2		1.5	85	6100	2.2*10 <sup>-6</sup>	24
	32	2.8		2.0	190	4800	7.3*10 <sup>-6</sup>	48

© FACPL&FACPS spacer selection, please refer to P.44

Ordering Example:	FACPS25	-	8	*	10	-	100 PCS
	Model no.		Ød1		Ød2		Q'ty