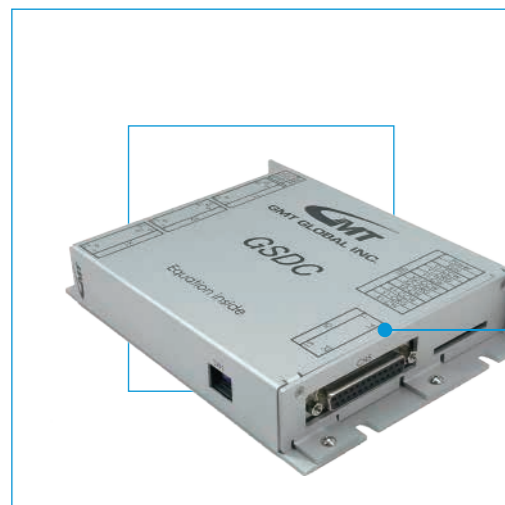
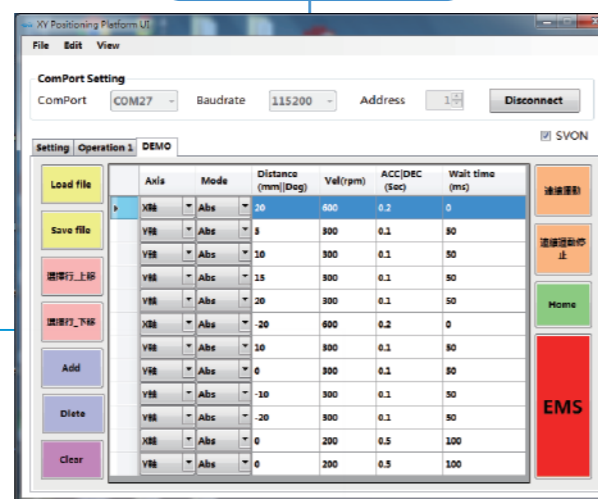


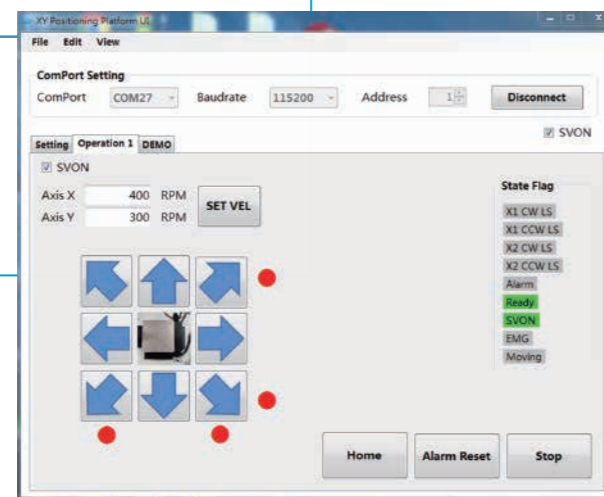
This driver is only suitable for AMSE (open-loop).



Sequence Diagram



UI Interface



Mechanism Testing



www.gmtglobalinc.com



Microscope Positioning & Hollow platform



Intelligent automatic convenience dream
Global Operation Headquarter
No. 357, Sec. 1, Yaofeng Rd., Puxin Township, Changhua County 513004, Taiwan
TEL : +866-4-828-2825
FAX : +866-4-828-2228
Website : www.gmtglobalinc.tw

China
Dongguan Ding Qi Intelligent Automation Technology Ltd.
No.8 Factory ,SHUI-BIAN Industrial Zone,
Hengli Town, Dongguan City, Guangdong
Guangdong Province,China
Email : Dst@gmt.tw

Xiushui Office
No.3, Ln. 34, Minzhu St., Xiushui Township, Changhua County, 504001, Taiwan
TEL : +866-4-768-8328
Email : gmt@gmt.tw

Dongguan Sales Office
TEL : +86-769-8671-8568 FAX : +86-769-8671-8567
1109, Building B1, Tian'an Digital Mall,
Huangjin Middle Road, Nancheng District,
Dongguan, Guangdong, China
Email : Dst@gmt.tw

Taiwan
North Area Sheng Feng Technology Co., Ltd.
TEL : +886-3-452-9922 FAX : +886-3-463-6060
15F-7, No. 286, Sec. 1, Gaotezhangan W. Rd., Zhongli Dist.,
Taoyuan City 320016 , Taiwan (R.O.C.)

Beijing Office
TEL : +86-40-0770-6066
Room 1018, Building 10, No. 1376, Xiaojiaoting,
Gaobeidian, Chaoyang District, Beijing, China
Email : Dst@gmt.tw

South Area Sheng Feng Technology Co., Ltd.
TEL : +886-6-270-3518 FAX : +886-6-270-3510
No.22, Aly. 53, Ln.428, Sec. 3, Wenhua Rd.,
Rende Dist., Tainan City 717021, Taiwan

Tianjin Office
TEL : +86-13-30-211-7506
Room 1005, Ronghui Building, No. 58, Dongting Road,
Second Street, Development Zone,
Binhai New Area, Tianjin, China
Email : Dst@gmt.tw

United States
USA Office
2F, 184 Augusta Ave
Toronto, ON M5T 2L6 , Canada
195 N. Harbor Dr. #3308
Chicago, IL 60601, United States

Wuhan Office
TEL : +86-27-8755-1037
C-1-902-1, Lianxiang Enterprise Center, Jiangxia District,
Wuhan City, Hubei Province, China
Email : Dst@gmt.tw

Germany
GMT Europe GmbH
Wilhelm-Busch-Straße 4, 26655 Westerstede, Germany
TEL : +49 4488 761 746 0
Email: sales@gmteurope.de Website : http://gmteurope.de/

Kunshan Sales Office
TEL : +86-512-5706-8646
Room 805(Po Yu Plaza), 8F, Building 99, No.335,
Chang Jiang North Road,
Kunshan City, Zhoushi Town, Jiangsu Province, China
Email : Dst@gmt.tw



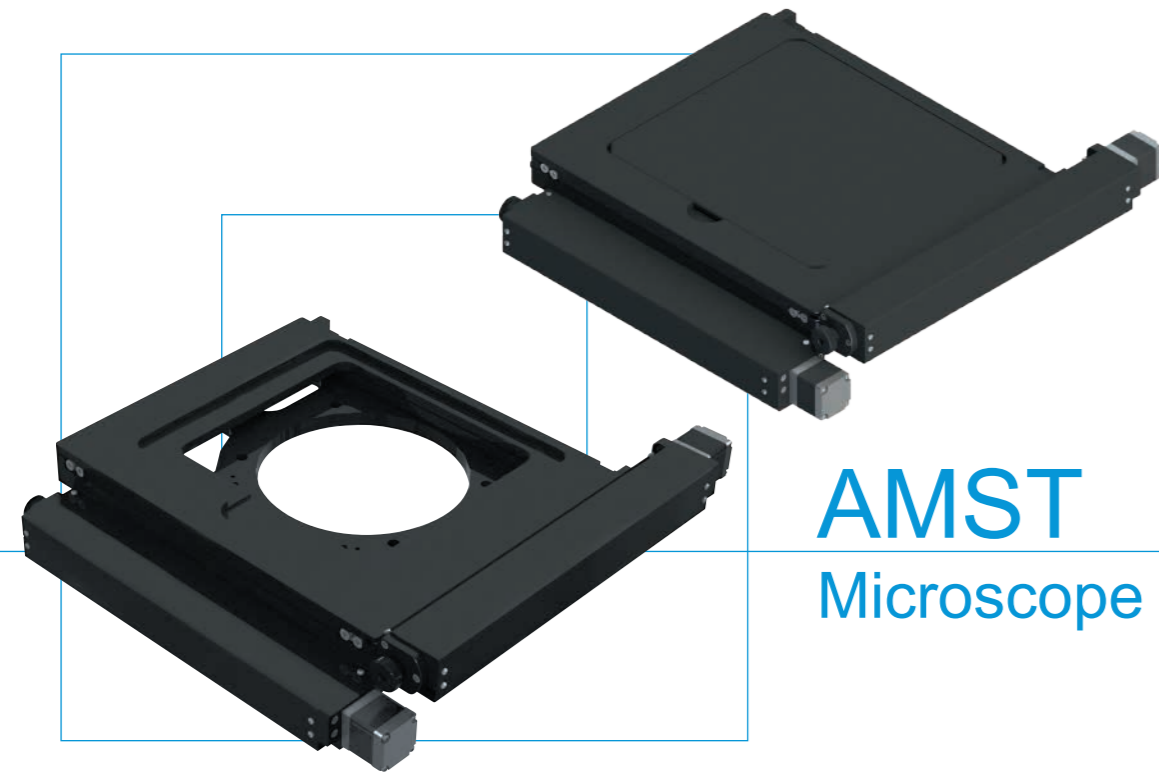
Features:

- ◎GSDC includes motion calculations. After users set corresponding parameters, it provides easy XY coordinate control without the need for complex formula calculations.
- ◎Equipped with RS232 and RS485 communication (configured based on the DIP switch settings).
- ◎The operating software includes motion program.

Driver Installation Notice:

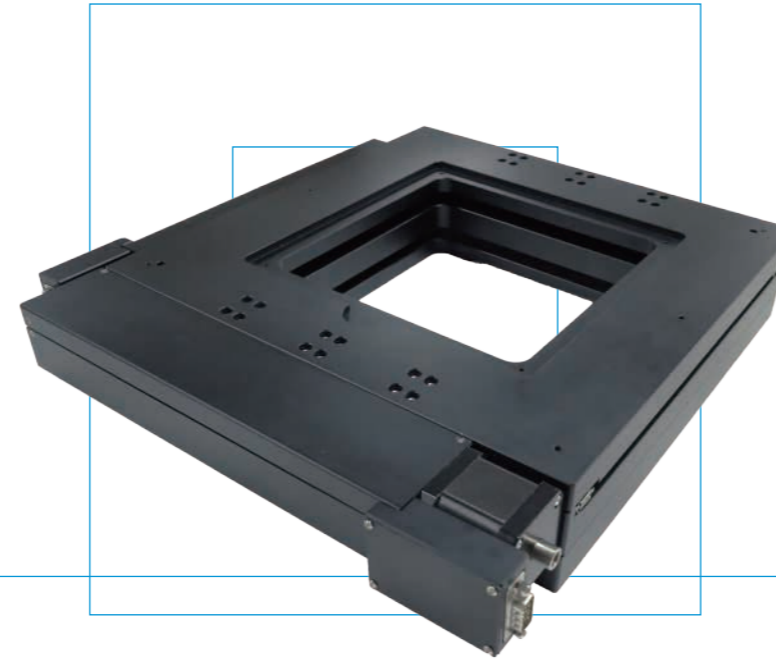
1. Install the driver with M5 screws on the bottom of the driver enclosure.
2. Please mount the driver on a smooth and flat metal surface to aid in heat dissipation.
3. If the driver is installed on a non-metal surface or in an environment with inadequate ventilation and temperatures exceeding 40°C, please use a fan for cooling to prevent the driver from overheating.
4. Please place the driver in a dry location free from metal debris or other conductive objects to avoid short-circuiting.
5. If you need to install two or more drivers in the same environment, please keep a gap of at least 2cm between the drivers to ensure effective heat dissipation.

*This driver is only suitable for 2-phase stepper motor (open-loop).



AMST
Microscope Stage

- High-accuracy, lightweight and slim design.
- Anti-glare black design is resistant to external light source interference.
- Mechanical and motor limits for providing dual protection for load operations.



AMSE
Hollow platform

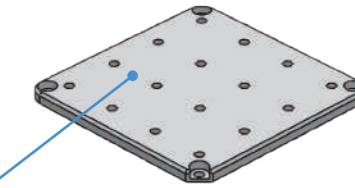
- Stepper motor direct-drive ball screw with a simple mechanism and low energy consumption.
- Direct-drive stage design reduces the use of adapter plates and risers.
- Large hollow design allows flexible fixture integration.
- Can be used in closed-loop with optical encoder.
- Optional accessories available (aluminum alloy breadboard).

Product Structure Description & Applicable Industries and Features

Optional Accessories

Features:

- Optional hollow breadboard or top breadboard available
- Convenient for customers to install related fixtures.

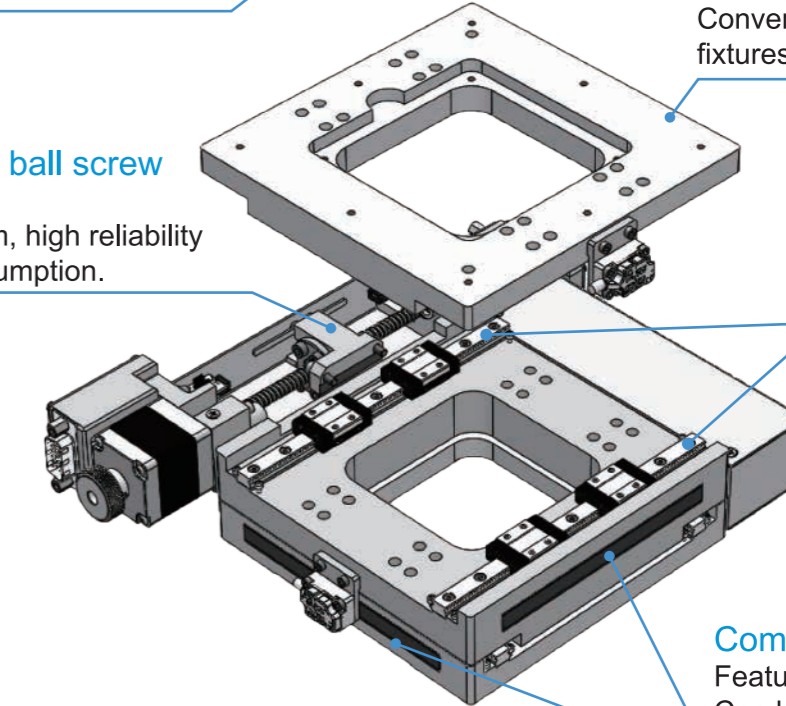


Tabletop with hollow design
Features:
Convenient for customers to integrate fixtures.

Motor Direct-drive ball screw

Features:

- Simplified mechanism, high reliability and low energy consumption.



Standard Miniature Rail Internal Circulation System
Low Wear, High Precision

Compatible with Optical Encoder
Features:
Can be externally mounted with optical encoder.



Lock in place by directly placing on the surface
Features:
Direct installation without adapter or riser required.

Model No.	AMST-50C	AMST-50WC	AMST-150C	AMST-200C	AMST-300C
Moving Direction	XY-axis				
Travel Distance (mm)	±25	X-Axis±50 · Y-Axis±25	±75	±100	±150
Stage Size (mm)	155x155	205x155	280x230	355x305	460x425
Weight of Mechanism (kg)	3.7	4.3	6.3	8.3	11.3
Stage Material / Surface Treatment	Aluminum Alloy / Black Anodized				
Maximum Speed (mm / sec)	16				
Resolution (Pulse)	Full / Half				
	0.002mm / 0.001mm				
Horizontal Straightness (mm)	0.01	0.01	0.01	0.015	0.02
Perpendicularity (mm)	0.015	0.015	0.015	0.025	0.03
Positioning Precision (mm)	X-Axis 0.02 Y-Axis 0.01		X-Axis 0.03 Y-Axis 0.03	X-Axis 0.06 Y-Axis 0.05	X-Axis 0.12 Y-Axis 0.1
Positioning Precision (1 / 10)	X-Axis 0.005mm Y-Axis 0.005mm	X-Axis 0.01mm Y-Axis 0.005mm	X-Axis 0.01mm Y-Axis 0.01mm	X-Axis 0.015mm Y-Axis 0.015mm	X-Axis 0.04mm Y-Axis 0.04mm
Repeatability Precision (mm)	±0.002				
Load Capacity	29.4N (3Kgf)			49N (5Kgf)	

Model No.	AMSE-050-A□	AMSE-100-A□	AMSE-150-A□
Moving Direction	X-Axis · Y-Axis	X-Axis · Y-Axis	X-Axis · Y-Axis
Travel Distance (mm)	±25mm	±50mm	±75mm
Drive Mode / Lead	Stepper motor direct-drive ball screw/2mm	Stepper motor direct-drive ball screw/4mm	Stepper motor direct-drive ball screw/5mm
Stage Size (mm)	130x130mm	230x230mm	310x310mm
Weight of Mechanism (kg)	2.0 kg	4.5 kg	10.5 kg
Stage Material / Surface Treatment	Aluminum Alloy / Matt Black Surface	Aluminum Alloy / Matt Black Surface	Aluminum Alloy / Matt Black Surface
Maximum Speed (mm / sec)	20 mm/sec	40 mm/sec	50 mm/sec
Mechanical Resolution	0.01mm	0.02mm	0.025mm
Travel Parallelism	X-Axis:0.010mm Y-Axis:0.030mm	X-Axis:0.015mm Y-Axis:0.035mm	X-Axis:0.015mm Y-Axis:0.040mm
Perpendicularity (Vertical)	0.015mm	0.020mm	0.025mm
Positioning Precision	X-Axis:0.030mm Y-Axis:0.030mm	X-Axis:0.040mm Y-Axis:0.030mm	X-Axis:0.050mm Y-Axis:0.040mm
Positioning Precision(1/10)	X-Axis:0.020mm Y-Axis:0.015mm	X-Axis:0.030mm Y-Axis:0.020mm	X-Axis:0.030mm Y-Axis:0.030mm
Repeatability Precision	±0.0015mm	±0.002mm	±0.002mm
Load Capacity	3.0 kg	4.0 kg	7.0 kg
Motor	2-phase 4-wire Stepper Motor - □28 direct-coupled		2-phase 4-wire Stepper Motor - □42 direct-coupled
Driver	Compatible model: GMT/GTR22G-D; GMT/GSDC; ORIENTAL/CVD206-K		
Sensor	Photoelectric Sensor (Front Limit, Rear Limit)		
	Power Supply Voltage		
Connector Type	D-SUB(male connector)		

Applicable Industries and Features:

- Multi-point and high-precision control function are applicable in medical, biotechnology, and electronics industries.
- Large stage and wide travel range are suitable for multiple component production and testing.
- High precision and repeatability reduce quality defects caused by human factors, ensuring product quality stability.